

Great Basin Landscape Conservation Cooperative

Informational Webinar

September 29, 2010

DRAFT

Welcome and Introductions

Penny Mabie, EnviroIssues facilitator, welcomed webinar participants and said the webinar was meant to be an introduction to the Great Basin Landscape Conservation Cooperative (LCC). Penny reviewed webinar logistics and told participants that the PowerPoint presentation, Great Basin LCC fact sheet, and a questionnaire would be emailed to them after the webinar.

Mike Pellant, Great Basin Restoration Initiative Coordinator, Bureau of Land Management (BLM), explained the BLM, with U.S. Fish and Wildlife Service (FWS), was tasked with initiating the Great Basin LCC. The BLM went to the U.S. Institute for Environmental Conflict Resolution (USIECR) to neutrally convene this effort and USIECR contracted EnviroIssues.

Rick Kearney, Assistant Regional Director Climate Change and Science, FWS, thanked webinar attendees for coming and said that the BLM and FWS are working in partnership to stand up the Great Basin LCC, but noted that they are not the leaders of the organization, only the hosts.

Overview of Landscape Conservation Cooperatives and the Great Basin LCC

Mike Pellant, presented slides on LCCs in general and presented the following information:

Landscape Conservation Cooperatives:

- Were established in Secretarial Order No. 3289 on September 14, 2009 by Interior Secretary Ken Salazar to better integrate science and management to address climate change and other landscape-scale issues
- Are self-directed science and management partnerships between Interior Department bureaus, other federal agencies, states, tribes, non-governmental organizations (NGO), universities, and stakeholders within a geographically defined area
- Better inform coordinated resource management actions that address climate change and other stressors within and across landscapes

What are LCCs?

- Public-private science and management partnerships formed to support landscape-scale conservation
- Link science and conservation delivery
- Include groups that agree to work together on common interests and issues

LCCs add value:

- Forum for coordination among partners – expanding on existing partnerships
- Science-based decision support tools
- Biological and geospatial data sharing
- Shared regional assessments
- Help partners define research needs

LCCs are not:

- Funding sources for conservation delivery – LCCs will partner with those already doing the on-the-ground projects
- Replacements for existing partnerships – LCCs will be a catalyst to help facilitate coordination
- Regulatory authority

There is a national integrated network of 21 LCCs in various stages of formation. LCC boundaries extend into Canada and Mexico, making it an international effort. The Great Basin LCC has the advantage that its boundaries are the same as floristically-defined boundaries that many partners use. There are a diverse number of landowners in the Great Basin; largest percentage of land is managed by BLM so they have a lot at stake and are committed to working with partners.

Issues in the Great Basin:

- Wildfires
- Invasive species
- Development
- Loss of habitat
- Water
- Climate change

Many partnerships, organizations and agencies are already working together in the Great Basin, such as the Great Basin Research and Management Partnership, Great Basin Environmental Program, Utah Partners for Conservation and Development, Nevada Partners for Conservation and Development, and Eastern Nevada Landscape Coalition. The concept of the Great Basin LCC is that it will help integrate all of the existing organizations, agencies and partnerships together and then link the LCC to the Climate Science Centers (CSCs).

2010-2011 available resources include:

- BLM LCC Coordinator
- USGS Research Scientist
- USFWS Science Coordinator

Rick Kearney reiterated that the Great Basin LCC is building a partnership between public and private partnerships and emphasized that the FWS and BLM are both committed to this effort.

Questions

Q: According to the ownership map presented, 22% is private in the GB, the second largest land ownership category. How are the private landowners being engaged in the LCC?

A: (Mike Pellant) We recognized that we will not be successful without that representation. We are doing outreach like this webinar, working through the counties and the cattlemen's association. We know the mining industry is huge. We welcome suggestions if you have them.

Q: What tribes are involved and are any on the webinar today?

A: (Mike Pellant) We need your help in identifying tribes and others that might be interested. The invite was sent to some tribal contacts and it looks like we have a representative from Washoe Tribe and the Duckwater Shoshone Tribe on the Webinar today.

Q: How are local priorities and local influence not going to be overlooked or ignored if this gains momentum?

A: (Mike Pellant) I will come back to the point that we are a self-directed partnership, the on-the-ground prioritization- we want to help inform but not tell where that would be. Our vision would be that the LCC would provide info across the landscape to help partners carry out activities on the ground at the local level which would lead to better informed decisions.

Penny asked if there were any other questions and noted that EnviroIssues would produce a summary of the Webinar and make that available.

Work-to-Date on the Organization's Formation

Penny Mabie explained that when EnviroIssues was first brought on to the project, they started doing research on other organizations, including how they were chartered and organized. EnviroIssues provided that information to the BLM and FWS and it was decided that the first thing to be done was to have a series of meetings to talk about how to form the organization. BLM state leads invited a set of people from each state and meetings were held in Boise, Salt Lake City, and Reno in May of this year. Each meeting had the same agenda, but each meeting built on the work of the previous meeting.

Over 100 participants from seven states attended the meetings and the results of the meetings were some loosely defined bounds of what the Great Basin LCC might be, what the mission might be, a list of potential partners and collaborators, and some challenges the organization might face, given that there are already many regional partnerships. The main recommendations from the May meetings were to conduct outreach for additional members, and to establish a short-term Organizing Committee to draft the mission, structure and governance of the Great Basin LCC.

Thirteen Organizing Committee members met in Boise, Idaho July 21-23 and discussed and/or drafted:

- Mission statement
- Governance
- Structure
- Decision-making

- Communication and outreach
- Next steps

The Organizing Committee was formed by individuals who volunteered at one of the three May meetings. The Organizing Committee is composed of the following individuals:

Bob Williams (represented by Selena Werdon)	U.S. Fish and Wildlife Service
Sara O'Brien	Defenders of Wildlife
Doug Neighbor	National Park Service
Duane Petite	The Nature Conservancy
Joe Tague	Bureau of Land Management
Kim Townsend	Duckwater Shoshone Tribe
Laura Richards	Nevada Department of Wildlife
Mark Biddlecomb	Intermountain West Joint Venture – Ducks Unlimited
Mike Pellant	Bureau of Land Management
Nat Frazer	Utah State University, Great Basin Research and Management Partnership
Randy Sharp	U.S. Forest Service
Rang Narayanan	University of Nevada, Reno, Great Basin Environmental Program
Rory Reynolds	Utah Department of Natural Resources

Penny then reviewed the products that emerged from the Organizing Committee’s work in July.

Draft mission statement:

The Great Basin Landscape Conservation Cooperative serves as a hub to enhance understanding of the effects of climate change and other natural and human disturbances across the region and promotes coordinated science-based actions to enable human and natural communities to respond and/or adapt to those conditions.

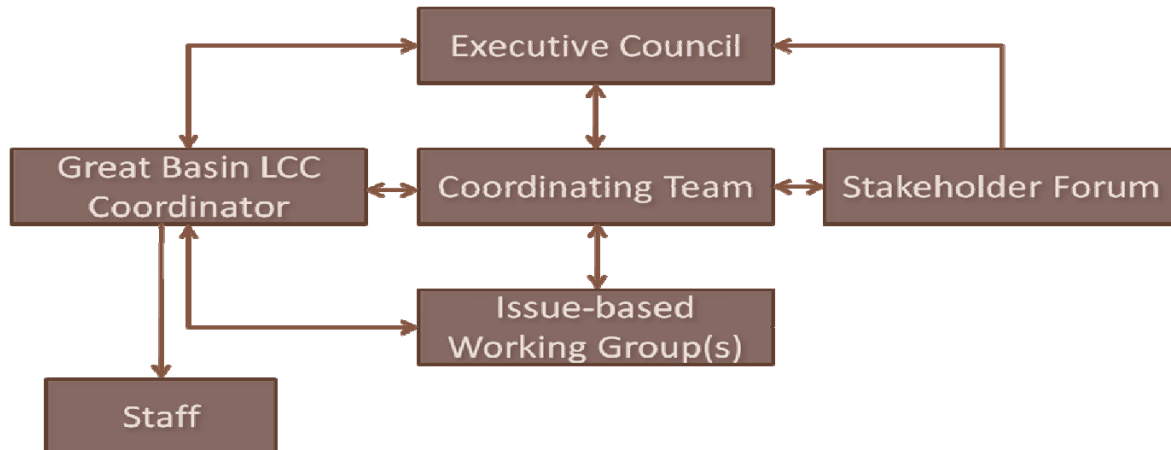
The GBLCC accomplishes this mission by providing leadership and a framework linking science and management to address shared priority ecological and socio-economic issues through:

- Fostering a forum for participation and coordination
- Facilitating communication and outreach
- Supporting and coordinating research and monitoring
- Providing access to data, tools and technical expertise

Penny described the proposed organizational structure of the Great Basin LCC (see graphic below). The Great Basin LCC will be led by an Executive Council who will work with a Coordinating Team. The Great Basin LCC Coordinator would work with both the Executive Council and the Coordinating Team. The Issue-based Working Groups will be organized around specific issues and will be doing the heart of the work. These groups may be temporary or permanent. The Stakeholder Forum will provide an

opportunity for those not intimately involved in other pieces of the organization to provide input and will also serve as a place to develop new members.

Organizational structure of the Great Basin LCC



Penny presented a series of slides outlining the basics, including roles and responsibilities of each part of the proposed organization:

Executive Council

- Oversight and decision-making
 - Decision-making is done via consensus, and when that is not possible, consensus of 75% will be reached with a minority report
- Funding and agency support
- Guidance to Coordinating Team
- LCC ambassadors – to ensure LCC gets attention and is recognized as an asset
- Proposed to have 21 members

Coordinating Team

- Operational management
- Work plan development
- Establish working groups
- Communication, manage stakeholder forum
- Oversight of working groups
- Convey information, needs and recommendations to Executive Council
- Proposed to have 32 members

Issues-based Working Groups

- Data and information management
- Technical reports, proposals and products
- Recommendations for filling data gaps
- *More details on working groups will be developed based on needs and priorities*

Stakeholder Forum

- Open to all
- Promotes and enables political support
- Report LCC accomplishments and progress and receive feedback
- Identify potential priorities, issues and needs
- Recruitment/self-nomination opportunity for Coordinating Team
- Outreach, education and technology transfer

Great Basin LCC Staff

- Coordinate with other LCCs
- Support Executive Council and Coordinating Team
- Perform day-to-day operations
- Report to Coordinating Team
- Track funding and budgets
- Report accomplishments

Penny asked for question or comments on the draft structure. Mike added that this is a lot of information to process and he encouraged attendees to look at the information and give us feedback via e-mail after having a chance to process it.

Potential Great Basin LCC Cooperators

Penny noted that one thing the Organizing Committee was very concerned about and talked about at the May meetings was who would be part of the LCC. The committee wanted to make sure they have covered all the bases and want to partner with everyone that has a need or interest.

- Agricultural groups
- Cities
- Conservation Districts
- Corporate/business interests
- Counties
- Energy interests
- Existing regional partnerships
- Federal agencies
- Industrial groups
- Irrigation districts
- Non-governmental organizations
- Private landowners
- State agencies
- Transportation planners
- Tribes
- Universities
- Wildlife groups
- Others

Penny asked participants if there were any potential cooperators missing from this list.

Participants suggested adding:

- Department of Defense
- Cooperative Extension Offices
- Wild horse Interest Groups

Penny told participants that the Great Basin LCC is working on a draft Charter, based on the information received at the May and July meetings and that it will be available for everyone to look at next week.

Timeline

- 2010
 - Finalize Charter – *the Organizing Committee will finalize a draft charter with recommendations, but there is no decision-making body until the Initial Executive Council is organized*
 - Form Initial Executive Council
- 2010
 - Hire Great Basin LCC Coordinator and Science Coordinator
 - Convene Coordinating Team
 - Begin forming Issue-based Working Groups
 - Establish Stakeholder Forum
 - Start identifying priorities

Penny announced that there is going to be a Great Basin LCC Basin-Wide Meeting on October 29, 2010 in Reno. The purpose of the meeting is to spend more time looking at the proposed charter, and other Great Basin LCC products and gather feedback from a broad range of stakeholders and potential participants.

On November 3, 2010, there will be a follow-up webinar, which will cover the material from the October 29, 2010 meeting and provide an opportunity for more input to the draft charter and other products for those who could not attend the Basin-Wide meeting.

Penny reminded webinar attendees listening in a large group to please fill out a sign-in sheet and send it to EnviroIssues so they can be added to the contact list for E-lets and other important information.

Discussion and Questions

Penny asked participants:

- What would you like to see discussed at the October 29 Basin-Wide Meeting?
- What questions do you have that should be answered at the Basin-Wide Meeting?

Q: Does the Great Basin LCC have a website?

A: *(Mike Pellant) We are trying to get a website organized and will send it out to you as soon as it is available.*

Q: When contacting the tribes for invite, did you go to their environmental offices or administration?

A: (Mike Pellant) We relied upon our state offices from BLM to gather the contact list. The Department of Fish and Wildlife provided some input as well. Please let us know if you have contacts at the tribes, if there is a better entity to go to within the tribes, we would like to do that.

Q: Thank you for sharing all the useful information about the mission and structure of the GB LCC. I have a much better understanding of the desired role. That being said and recognizing this is a brand new and still somewhat conceptual initiative, can you please explain how the LCC is different than both the GB research & management partnership as well as the GB Cooperative Ecosystem Studies Unit. (As an active participant with the CESUs, aside from the fact that CESUs are administered by the National Park Service, the LCC concept seems to very much be a duplication of effort. . . at least where CESUs are active.)

A: (Mike Pellant) That's one of the things we are really focusing on now. There is some overlap between science and management connections but I think what the LCC brings is more outreach to a broader audience and different resources. Currently, we are trying to work out the role of the GBCESU and GBRMP. We know they have made a lot of progress and maybe we can integrate them but this is one of the things we need to work through. We are getting together on Nov. 1, 2010 in Reno with representatives from those organizations to talk about the Great Basin LCC.

Q: When is the LCC Coordinator going to be onboard?

A: (Mike Pellant) The BLM is working on the position description and working to get the description into personnel and classification to expedite the process.

Q: Can you talk about the 2011 funding money and the ability to utilize it as a way to see good work funded?

A: (Mike Pellant) The Washington Office is committed to this LCC and supporting it with the Coordinator position. I believe there will also be some project funds associated with the position. We are trying to get through the paperwork as quickly as possible to bring that person onboard.

Q: After hearing the question about possible redundancy, it seems there are a number of people and entities who have an interest in the concept. With that as a preface, a question arises that includes an inquiry into what is being addressed at this point? Is there a comprehensive list of those entities that can be made available to those on this webinar?

A: (Mike Pellant) Yes, I think that we can provide a link to the websites that include info on structure and governance.

Q: When contacting the tribes for invite, did you go to their environmental offices or administration?

A: (Mike Pellant) We relied upon our state offices from BLM to provide tribal contacts and the FWS provided input as well. If there is a better entity to contact within the tribes, we would like to do that.

Q: Is the schedule for 2010 and 2011 Fiscal Year or Calendar Year?

A: (Penny Mabie) The timeline listed in the PowerPoint is for the calendar year but we recognize that the Great Basin LCC relies on the federal fiscal year for funding.

Comment: Southern Utah University would be pleased to host a future meeting of the GBLCC Executive Committee.

Penny thanked everyone for attending. Penny said that EnviroIssues would be sending out information, including a questionnaire and encouraged attendees to get the information out to those who could not attend the webinar. Penny asked participants to fill out the questionnaire and to scan it and e-mail it, or fax it to EnviroIssues as those will help inform the agenda for the Basin-wide Meeting.

Penny encouraged attendees to send questions or comments to us after the meeting.