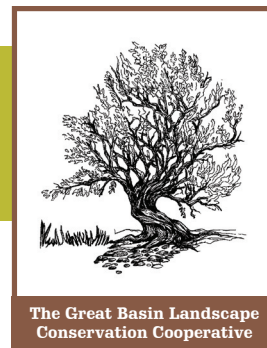


The Great Basin Landscape Conservation



What is a Landscape Conservation Cooperative?

Landscape Conservation Cooperatives (LCCs) are applied science and management partnerships between Interior Department bureaus and others involved in natural resource management and conservation. Secretarial Order No. 3289, issued on Sept. 14, 2009 by Interior Secretary Ken Salazar, calls for the establishment of 21 LCCs nationwide to better integrate science and management to address climate change and related issues

What will the Great Basin LCC do?

In broad terms, the Great Basin LCC will help link and integrate Interior's proposed Climate Science Centers with resource managers and science users; will bring additional Interior resources to bear on landscape-scale issues and opportunities; and will help in applying science and facilitating coordination on a wide range of efforts to respond to climate change, invasive species, wildfires, human development and other change agents across the Great Basin. Specific objectives and priorities will be determined by the partnership itself. Once established, an executive council, coordinating team and LCC staff will evaluate regional needs and develop an initial set of proposed objectives and priorities for the LCC. The LCC is not intended to replace existing organizations already accomplishing conservation work in the Great Basin. The aim is to facilitate, enhance and inform that work.

How is the Great Basin LCC being organized?

The BLM, with the assistance of the U.S. Fish and Wildlife Service, has volunteered to take the lead in convening potential partners to guide the startup of the Great Basin LCC.

Potential partners include Federal, State agencies; Tribes, many existing regional, state and local partnerships; nongovernmental organizations (NGO); universities; private landowners; and others. The LCC partners will collectively determine the structure of the LCC, the breadth of its activities and the priority tasks to be addressed.

In May 2010, the BLM and FWS hosted three informational kick-off meetings for the Great Basin LCC in Boise, Idaho, Salt Lake City, Utah and Reno, Nevada which attracted nearly 100 participants. The purpose of these meetings was to introduce the Great Basin LCC, discuss potential organizational issues, identify membership for

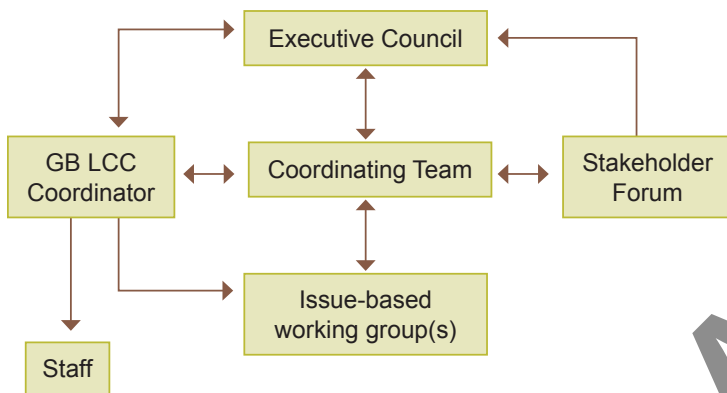
What is the Great Basin LCC?

The Great Basin LCC will be a self-directed partnership. The Great Basin LCC will provide a range of scientific and technical support tools for landscape-scale conservation design to a wide array of managers. These tools will help managers identify and target biological objectives for native species and habitats in the face of climate change and other stressors. Open public access to Great Basin LCC products will promote acceptance and use of the science in regional conservation strategies. This effort is being coordinated with other regional partnerships and will be set up in a manner that will facilitate coordination and the identification of needs, capacities and gaps. We will link our efforts to bring additional science capacity to improve conservation strategies and projects and the pre-design of monitoring, research with the biological planning, conservation design and evaluations deliver conservation on the ground with those partners.



an organizing committee, identify next steps to attract and engage additional partners in the Great Basin LCC formation and to move the organizational process forward.

In July 2010, the organizing committee convened to develop the draft vision, mission and structure for the LCC. Through a two-day, facilitated session, the organizing committee discussed the elements of the draft LCC charter and structure, developed a draft vision and mission statement, and began identifying potential members of the coordinating team and the interim executive council that will lead the LCC until the permanent executive council begins its work.



The organizing committee proposed the following mission for the Great Basin LCC:

The Great Basin Landscape Conservation Cooperative serves as a hub to enhance understanding of the effects of climate change and other natural and human disturbances across the region and promotes coordinated, science-based actions to enable human and natural communities to respond and/or adapt to those conditions.

The GBLCC accomplishes this mission by providing leadership and a framework linking science and management to address shared priority ecological and socio-economic issues through:

- Fostering a forum for participation and coordination
- Facilitating communication and outreach
- Supporting and coordinating research and monitoring
- Providing access to data, tools and technical expertise

The Great Basin LCC and the organizing committee are seeking input from the many potential partners on the proposed structure, governance and membership of the LCC and will be reaching out to all potential partners through webinars and in-person meetings to move the formation of the LCC forward.

How can I participate?

BLM will host a basin-wide webinar on Sept. 29, 2010, a basin-wide in-person meeting in Reno on Oct. 29, 2010 and an accompanying webinar on Nov. 2, 2010 for those who can't attend the in-person meeting. All events are open to all. Please see our website at <http://www.doi.gov/whatwedoclimate/strategy/Great-Basin.cfm> for more details about these events.

Great Basin LCC Organizing Committee

Bob Williams - US Fish and Wildlife Service, bob_d_williams@fws.gov

Bruce Taylor - Defenders of Wildlife, btaylor@defenders.org

Doug Neighbor - National Park Service, doug_neighbor@nps.gov

Duane Petite - The Nature Conservancy, dpetite@tnc.org

Joe Tague - Bureau of Land Management, Joe_Tague@blm.gov

Kim Townsend - Duckwater Shoshone Tribe, HMGBRD@peoplepc.com

Laura Richards - Nevada Department of Wildlife, lrichard@ndow.org

Mark Biddlecomb - Intermountain West Joint Venture - Ducks Unlimited, mbiddlecomb@ducks.org

Nat Frazer - Utah State University, Great Basin Research and Management Partnership, nat.frazer@usu.edu

Randy Sharp - US Forest Service, rsharp@fs.fed.us

Rang Narayanan - Great Basin Environmental Program, and Great Basin Cooperative Ecosystem Studies Unit, rang@cabnr.unr.edu

Rory Reynolds - Utah Department of Natural Resources, roryreynolds@utah.gov

Mike Pellant - Bureau of Land Management, Mike_Pellant@blm.gov

Contacts:

Mike Pellant - Bureau of Land Management

Phone: 208-373-3823

Email: Mike_Pellant@blm.gov

Rick Kearney - US Fish and Wildlife Service

Phone: 916-978-6160

Email: Richard_Kearney@fws.gov